



Since 1996, **Marc, Philippe** and **Jean-Luc ROSER**, the executives of **R&D Technology** and their employees have been building relationships with their customers based on trust, a result of their skills and commitment. The entire **R&D TECHNOLOGY team** has built, over the years, the values that define us today:

Innovation is in the DNA of R&D TECHNOLOGY. **Passion** is a key driver in the process of creating new solutions. **Excellence**, is our permanent goal. **Responsibility** : R&D Technology is aware of its responsibility towards the **environment** but also towards the **safety** and well-being of its **employees**. And finally, a business **ethics** based on **honesty** and **integrity**.

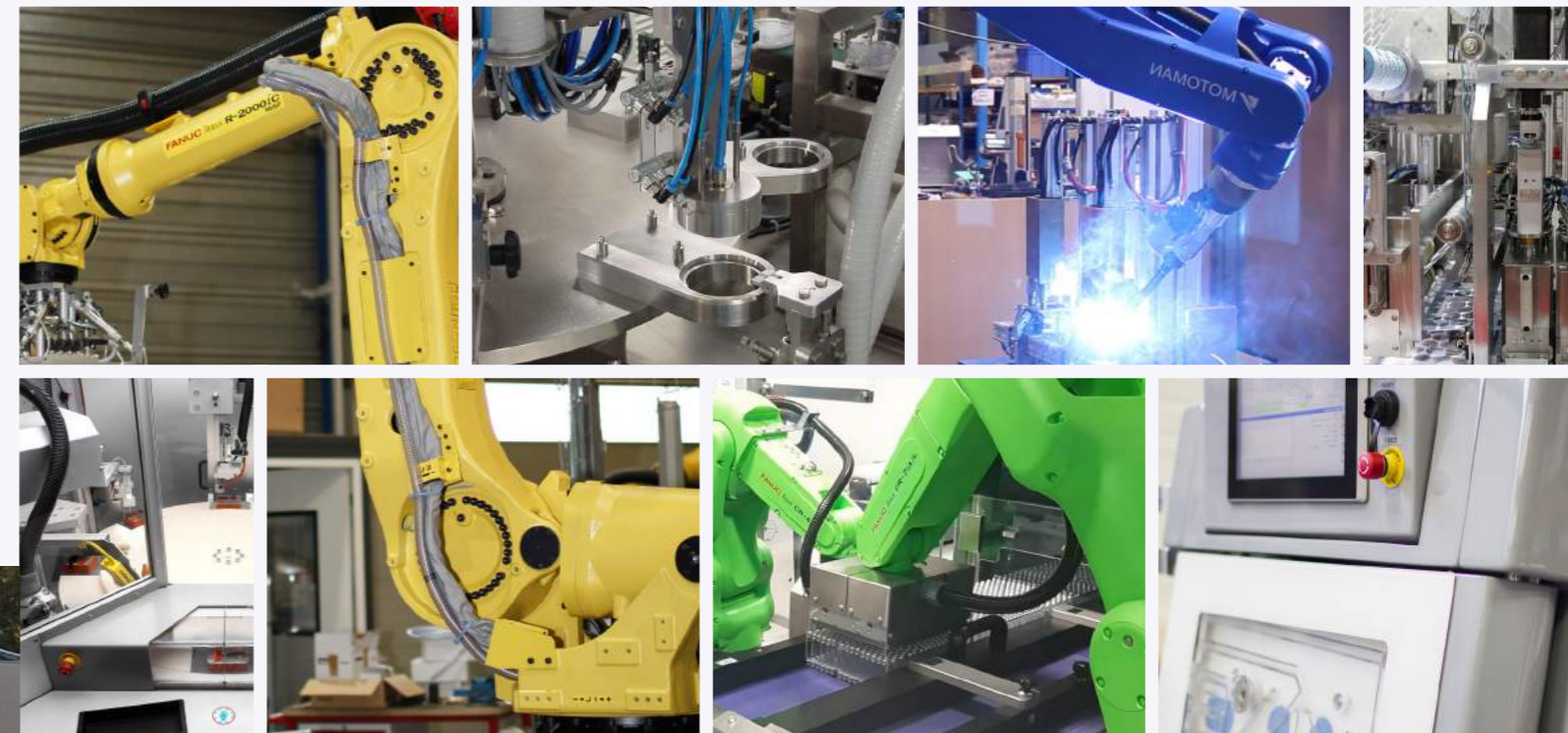
EXCELLENCE

ETHIQUE

PASSION

ENGAGEMENT

INNOVATION



R&D Automation

11, rue des Rustauds - ZAC du Martelberg
67700 MONSWILLER, France
info@rd.technology
+33 (0)3 88 03 40 00

FP Lyon

6, chemin du Lyonnais
69720 SAINT BONNET DE MURE, France
fplyon@fplyon.fr
+33 (0)4 78 96 95 12

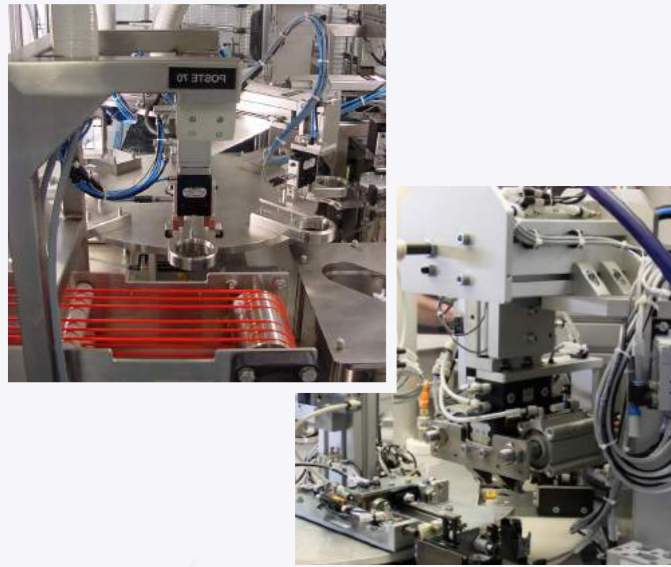
Innovation for **Industry**

www.rd.technology

R&D TECHNOLOGY is a group of SME made up of around 80 engineers & technicians and located in Saverne and in Lyon.

Our job is to provide solutions to industrialize new products or optimize existing manufacturing process, and support project initiators who wish to develop innovative and technological equipment.

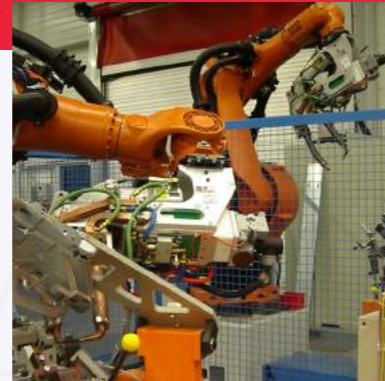
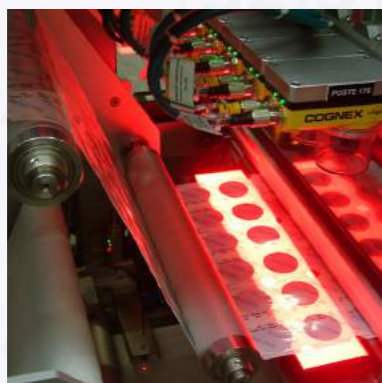
We have acquired a solid global reputation of seriousness and efficiency in the various industrial sectors of medical and pharmaceutical industries, food processing, automotive, mechanical and electromechanical engineering.



CUSTOMISED SOLUTIONS

Customised production equipments find their application wherever standard solutions are not suitable...

Working closely with the client's technical departments, R&D TECHNOLOGY studies and proposes a tailor-made production solution. It relates to such things as assembly lines, ergonomic workstations, implementation of vision control systems, etc.



ROBOTICS AND COBOTICS

The robotic cells designed and created by R&D Technology are generally produced for welding, screwing, gluing, handling and palettizing, etc. Robotic cells can be arranged around a rotary table to enable background loading or unloading. R&D develops global, turnkey solutions, perfectly integrated into your environment.



FLEXIBLE AND EVOLUTIVE ASSEMBLY

The Evolubox® assembly machines developed by R&D Technology enable welding, clipping, riveting, gluing, screwing, crimping, small machining, lidding, handle fitting, etc. Automatic loading and unloading can be added to the machines.

The EvoluBox® concept has also been declined for clean room manufacturing.



- # SUPPORT FOR INNOVATION
- # SMALL-SERIES PRODUCTION OF EQUIPMENT

The exclusive Novact® offer is intended for project initiators who wish to develop and innovative technological equipment.

R&D TECHNOLOGY is also able to offer small-series production of equipment resulting from this approach.

